

# Sterilization unit

(Engineering requirement)

November, 2016

## 1. Sterilization flow of work

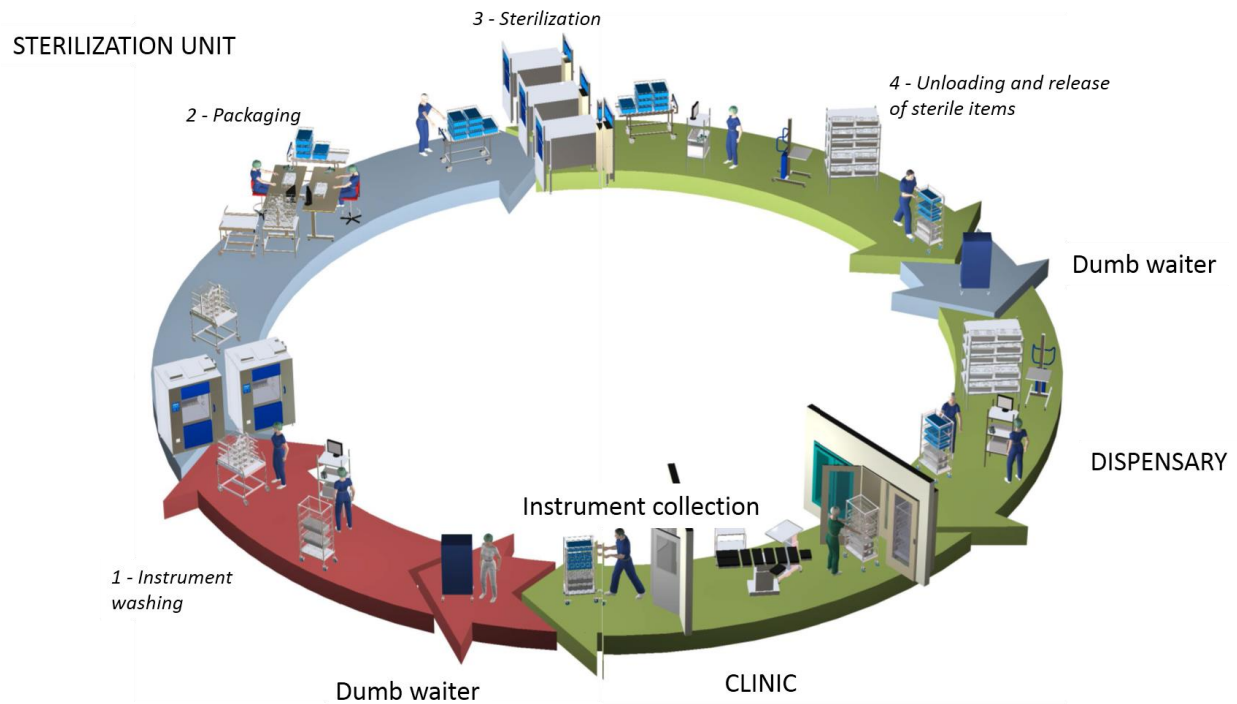


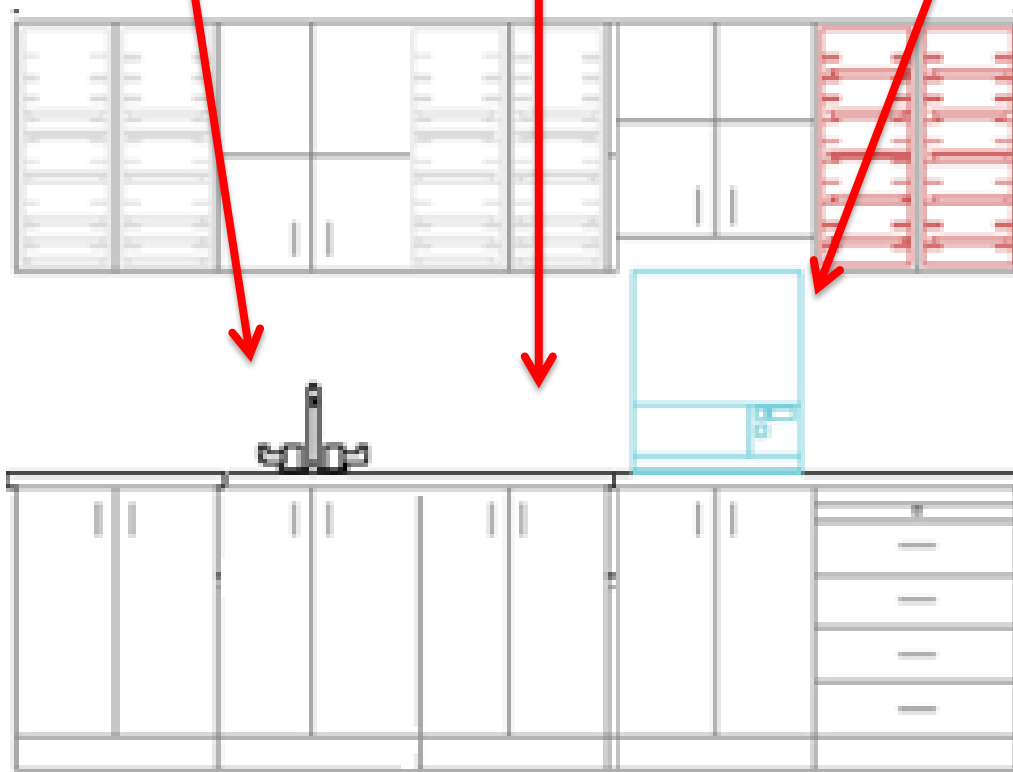
Figure 1: Sterilization cycle, from the dispensary to clinic to sterilization unit, adapted from MCGill

## 2. Sterilization unit layout

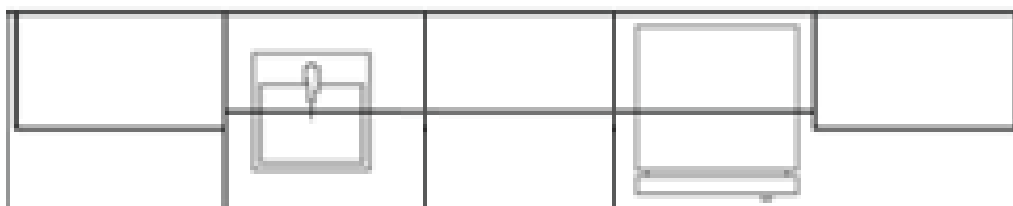
- a. With regards to Clinics, Health centers with minor procedures such as dental, figure 2 shows both side view and top view of the room.

The room size should fit the three processes allowing one square meter for each staff. Interior engineering requirements will be as follows:

1. Medical furniture
2. PVC flooring
3. Antibacterial paint
4. Exhaust fan
5. ceiling material should be with a smooth surface and anti- dust.

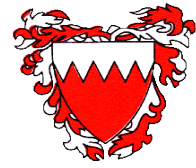


Side view



Top view

Figure 2: minor sterilization room design



- b. Hospitals with high level operations, should differ from the previous layout, however the process will remain the same. Overall the layout should comply with the HTM standards

Interior engineering requirements will be as follows:

1. Medical furniture
2. PVC flooring
3. Antibacterial paint
4. HEPA filter and negative/positive pressure
5. See layout below as a reference which was adapted from the HTM (HBN-CSSD)

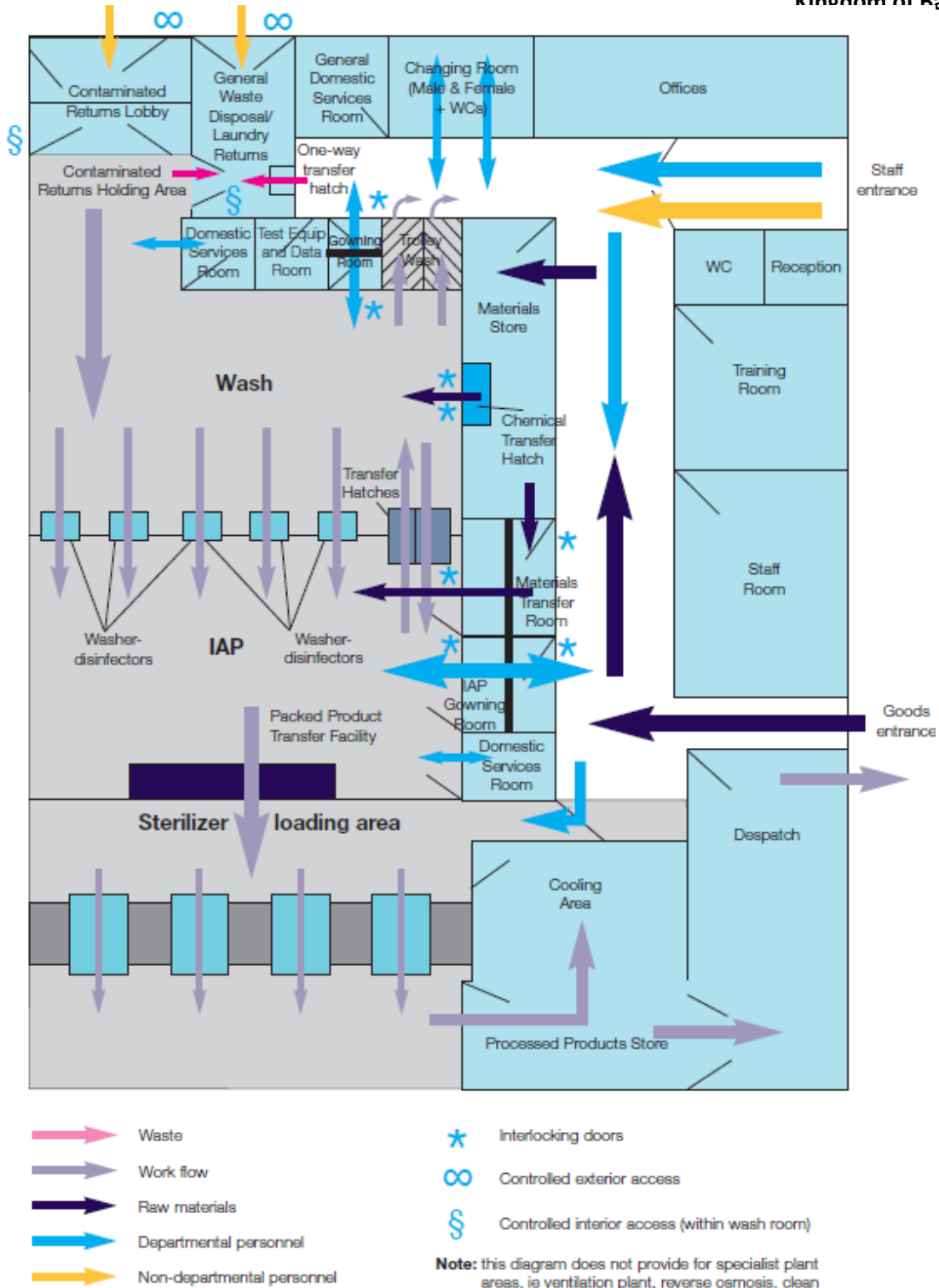


Figure 3: double door sterilizer room layout, adapted from HTM standards.

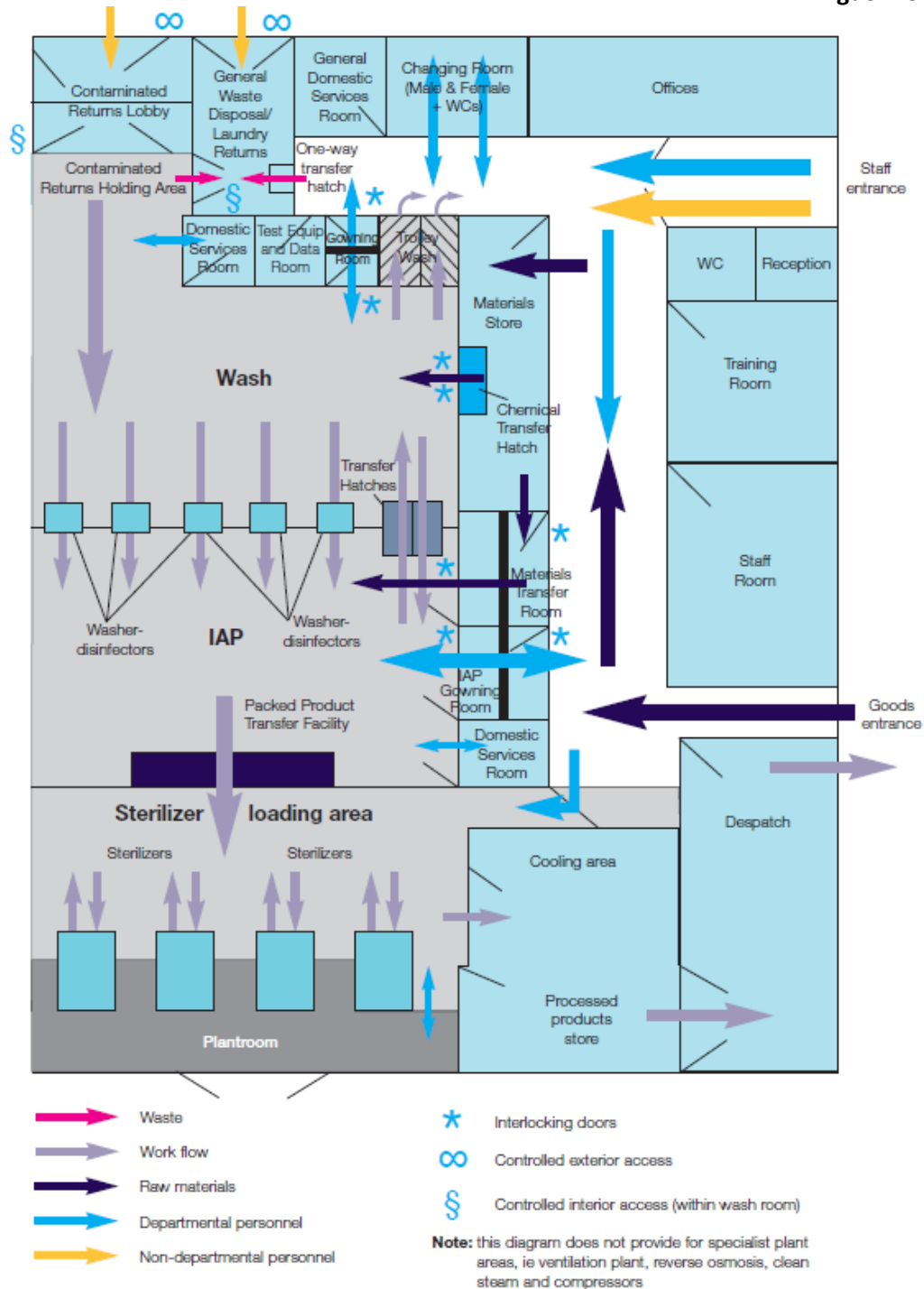


Figure 4: Single door sterilizer room layout, adapted from HTM standards.